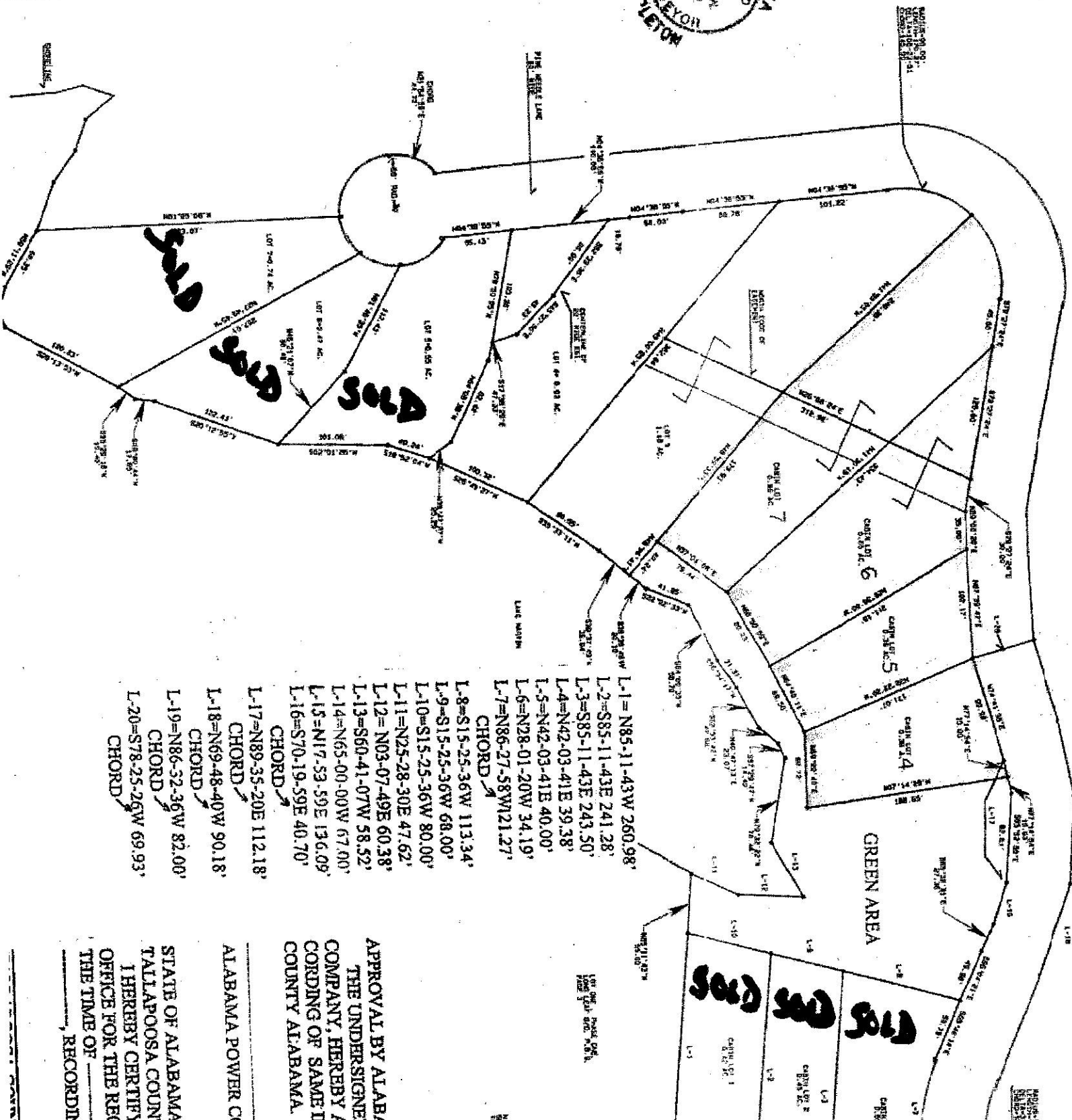


ALABAMA
 JOHN
 BIRD
 SHERIFF
 TROY
 SHERIFF



- L-1=N85-11-43W 260.98'
- L-2=S85-11-43E 241.28'
- L-3=S85-11-43E 243.50'
- L-4=N42-03-41E 39.38'
- L-5=N42-03-41E 40.00'
- L-6=N28-01-20W 34.19'
- L-7=N86-27-58W 121.27'
- CHORD
- L-8=S15-25-36W 113.34'
- L-9=S15-25-36W 68.00'
- L-10=S15-25-36W 80.00'
- L-11=N25-28-30E 47.62'
- L-12=N03-07-49E 60.38'
- L-13=S60-41-07W 58.52'
- L-14=N65-00-00W 67.00'
- L-15=N17-53-59E 136.09'
- L-16=S70-19-59E 40.70'
- CHORD
- L-17=N89-35-20E 112.18'
- CHORD
- L-18=N69-48-40W 90.18'
- CHORD
- L-19=N86-52-36W 82.00'
- CHORD
- L-20=S78-25-26W 69.93'
- CHORD

APPROVAL BY ALABAMA
 THE UNDERSIGNED
 COMPANY, HEREBY A
 CORDING OF SAME IN
 COUNTY ALABAMA.

ALABAMA POWER CO

STATE OF ALABAMA
 TALLAPOOSA COUNTY
 I HEREBY CERTIFY
 OFFICE FOR THE REC
 THE TIME OF _____
 RECORDING